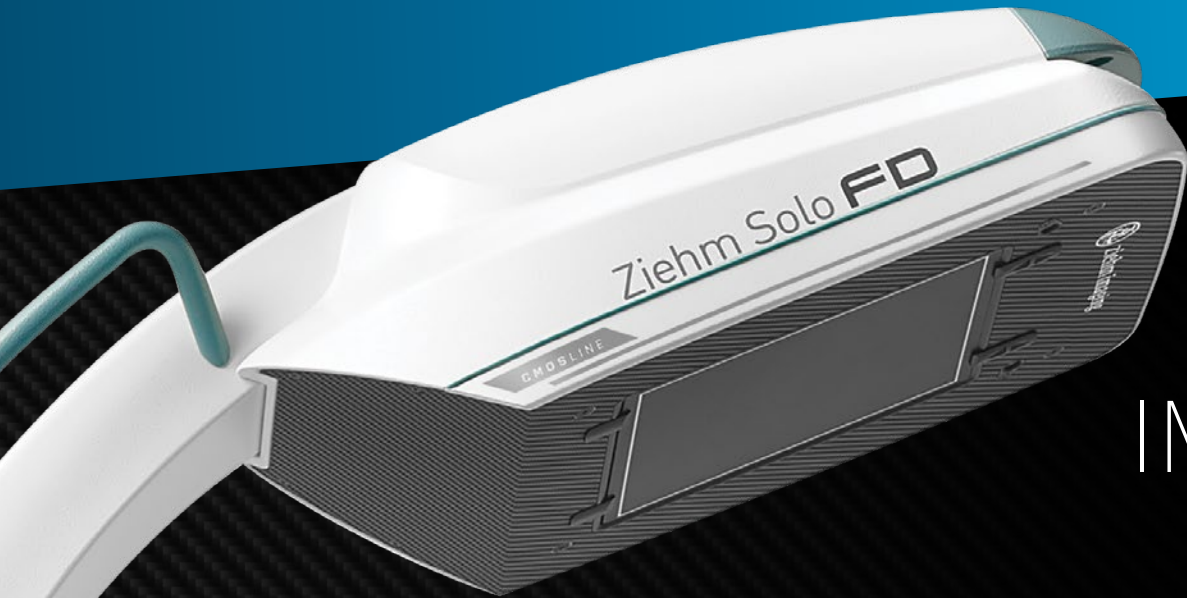


Ziehm Solo **FD**

Versatile design meets latest
flat-panel technology



FREEDOM TO IMAGE YOUR WAY.



SmartDose

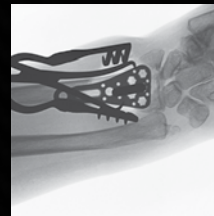
Best image quality. Minimized dose.

This comprehensive concept consists of a broad, clinically proven application portfolio to address the daily challenges of low dose and high image quality. With significant dose savings, Ziehm Imaging sets the benchmark in user-friendly adjustment of dose exposure¹.

See below for the full list of applications and what they can do.



Elbow Imaging



Wrist Imaging



Ankle Imaging



Foot Imaging



Shoulder Imaging

The future of efficiency

CMOS flat-panel technology²

Image quality and efficiency are the most important but also challenging factors in daily clinical routine. In comparison with conventional C-arms, the latest flat-panel technology CMOS achieves higher spatial resolution due to smaller pixel sizes combined with lower noise levels and a higher read-out speed at full resolution. True resolution, especially in the magnification modes, makes interpolation unnecessary. CMOS technology therefore enables improved overall efficiency.



**LASER
POSITIONING
DEVICE**

Integrated in flat-panel and generator housing for accurate & dose-free positioning of C-arm



PREMAG

For exposure-free magnification of X-ray images



**REDUCTION
OF PULSE
FREQUENCY**

Manually or fully automatically to lower the accumulated dose



**VIRTUAL
COLLIMATORS**

For exposure-free positioning of collimators



**ANATOMICAL
PROGRAMS**

With automatic optimization of dose and image quality for best results



**LOW DOSE
MODE**

In all anatomical programs for particularly dose-sensitive procedures, e.g. in pediatrics



APPLICATIONS

Orthopedics, Trauma, Pain Management & more with CMOS technology



AFFORDABILITY

Lowest entry & ownership cost of any full size flat-panel detector system on the market



FLEXIBILITY

165° of orbital movement & 34" of free space for easier patient coverage



MAGNIFICATION MODE

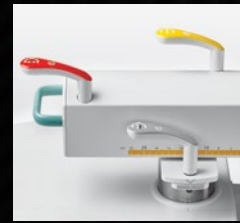
Zero dose increase while retaining image quality



Advanced clinical workflow

Work smarter. Not harder.

Take advantage of 165° orbital movement for easier patient coverage. Increase safety as the wireless footswitch reduces the amount of cables on the OR floor. Ensure easy and unmistakable communication thanks to color-coded handles. In the face of time and efficiency pressure, compatible clinical workflows help to operate the C-arm in an easy and intuitive way. The Solo Center is a touchscreen with a modular software architecture, ensuring maximum flexibility. Store images wirelessly to the PACS from any location. With Ziehm Wireless Video, live images can be transferred to wall-or ceiling mounted monitors in real-time.



All-in-one design

The ultimate space saver

As the size of hospital and surgery center ORs decreases and equipment quantity rises, the demand for imaging systems with smaller footprints is growing. With its all-in-one design, the Ziehm Solo FD is one of the most compact C-arms for even the smallest treatment scenarios on the market – now equipped with CMOS flat-panel technology to perform a broad portfolio of applications.



To automatically analyze the area of interest & minimize dose while optimizing image quality



For intelligent, fast regulation of pulse rate to lower the dose level



To reduce dose in pediatric & other dose-sensitive procedures



For reduced skin entrance dose without compromising on image quality



To display fast-moving objects like guide wires & even the smallest vessels in razor-sharp image quality



For large patients – with no additional increase in dose

For a full list of specifications, visit orthoscan.com.

MONITOR

Display size	19" (x2)
Ziehm Viewing Station	Optional

FLAT-PANEL

Type	CMOS technology
Detector size	20.5cm x 20.5cm

X-RAY GENERATOR

Pulsed fluoroscopy kV range	40 - 120 kV
Pulsed fluoroscopy mA range	0.2 - 20 mA
Pulse rates	25, 12.5, 8, 4, 2, 1 pps

ELECTRICAL

Power supply	120 VAC ± 10%, 60 Hz
--------------	----------------------

IMAGE PROCESSING

Image capacity	100,000
Wireless communication	Optional
Multifunction wireless foot switch	Optional
Printer	Optional
DVI (external monitor)	Optional

DIMENSIONS

Weight	765 lb (± 3%)
Height	69" - 85"
Width	31.5"
Length	67" - 76"



Product Support

Nationwide service coverage

Nationwide service coverage is available with 24/7 phone support from our service team. Our service programs cover the lifespan of our mobile C-arms, ranging from periodic maintenance to complete coverage programs. You can depend on us for flexible, fast, and reliable service.

- ✓ Toll-free service
- ✓ Comprehensive service programs
- ✓ 24/7 support

Call: **866.949.4346**



Orthoscan has partnered with Ziehm Imaging to distribute the Ziehm Solo FD

www.orthoscan.com 480.503.8010 14555 N 82nd St, Scottsdale AZ 85260

Orthoscan is a registered trademark of Orthoscan, Inc. Product features and specifications are subject to change without notice. 110-0241 Rev A, 5/10/2019 © 2019 Orthoscan, Inc. ¹ In clinical practice, the use of SmartDose may reduce patient dose depending on the clinical task, patient size, anatomical location, and clinical practice. A consultation with a radiologist and a physicist should be made to determine the appropriate dose to obtain diagnostic image quality for the particular clinical task. ² CMOSline represents a system configuration that is based on a Ziehm Imaging CMOS flat-panel detector. ³ Gosch D. et al. "Influence of grid and ODDC on radiation exposure and image quality using mobile C-arms – First results", R6Fo, 09/07. ⁴ The technology Beam Filtration reduces dose exposure for all CMOSline systems in comparison to conventional filtration techniques (Status before September 2017). Data on File. Results may vary.