

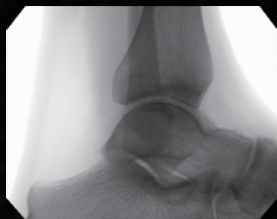


# MOBILE DI

Portable digital diagnostic  
imaging & fluoroscopy



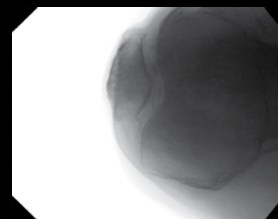
Hand Imaging



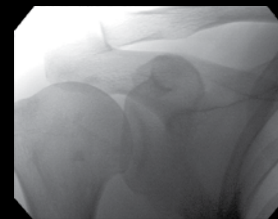
Ankle Imaging



Foot Imaging



Knee Imaging



Shoulder Imaging



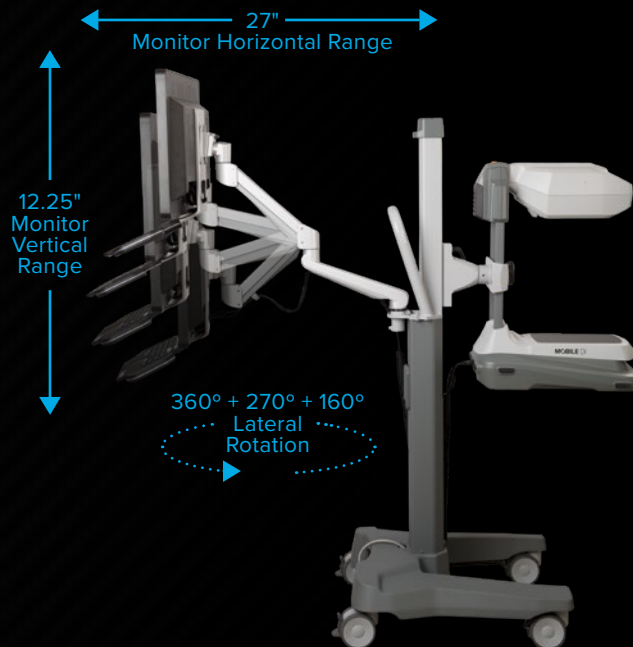
## FEATURES

- Smallest footprint
- Portable mini C-arm
- Digital diagnostic imaging & fluoroscopy
- 35lb self-contained unit
- Most affordable Orthoscan mini C-arm
- Wheeled storage case provides easy transport between locations

## Mobile Accessory Cart

### Movement & optimal viewing

Transport your Mobile DI between exam rooms with the optional Mobile DI Accessory Cart. Whether in standing or sitting position, this defining accessory allows you to reposition the detector and monitor with ease. With improved articulation to the monitor arm, view real-time results with your patients on a detail-rich display without adjusting.



## ACCESSORIES

Maintain clinical excellence with these accessory options:

- Weight-bearing Foot Bench
- Custom Covers & Drapes
- Wheeled Storage Case
- Desktop Setup

## PROCEDURES

Achieve improved work flow, increased patient satisfaction, & reduced lead times with additional procedures:

- Dynamic Views
- Fluoroscopic Guided Injections
- Radiologic Examinations
- Stress Views
- Pin Removals
- Closed Reductions
- Motion Studies
- Joint Stability Tests
- Arthrography

# CLINICAL & OFF-SITE EXTREMITY IMAGING.

- 1. LIVE IMAGE SIZE** | Expect exceptional diagnostic imagery with a 12" x 9.5" live image to see fine details of anatomy with vivid clarity.
- 2. 24" MONITOR** | See more on-screen content with a resolution of 1920 x 1200 in bright detail for an immersive imaging experience.
- 3. ORTHOTOUCH™** | Advanced touchscreen interface.
- 4. MONITOR ARM** | Allows for easy adjustment of monitor and keyboard for viewing of anatomy while standing or sitting.



For a full list of specifications, visit [orthoscan.com](http://orthoscan.com).

### MONITOR

Display size	24" LCD
Primary "live" image	12" x 9.5"
Dual reference image	5" x 4"

### DETECTOR

Type	CMOS detector
Detector size	15cm x 12cm

### X-RAY GENERATOR

kV range	40 - 78 kVp
mA range	0.040 - 0.160 mA
Operating mode	Continuous

### ELECTRICAL

Field controls	Single
Wired hand & foot switch	✓
Laser alignment	✓

### DOCUMENTATION

Wireless communication	Optional
DICOM 3.0 compliant	✓

### MECHANICAL

Weight	35lb
Height	25"
Footprint (W x L)	12" x 19"



**Increased Reimbursement**  
**Use fluoroscopy to bill for additional procedures.**

With an average of 3 - 6 fluoroscopy procedures per week, you will be able to recover the cost of your Mobile DI. Use the list of common procedures on the right to estimate your potential revenue.\*

CPT Code	Procedure Description	Medicare Ntl. Avg.
73030	Shoulder, radiologic examination	\$30
73110	Wrist, radiologic examination	\$35
73564	Knee, radiologic examination	\$40
73580	Knee, radiologic exam, arthrography	\$120
73630	Foot, radiologic examination	\$30
76000	Fluoroscopy, up to one hour	\$50
77002	Fluoroscopic needle guidance	\$95
77071	Stress view	\$50